

- 1 (a) Complete the table of values for $y = x^2 - 2$

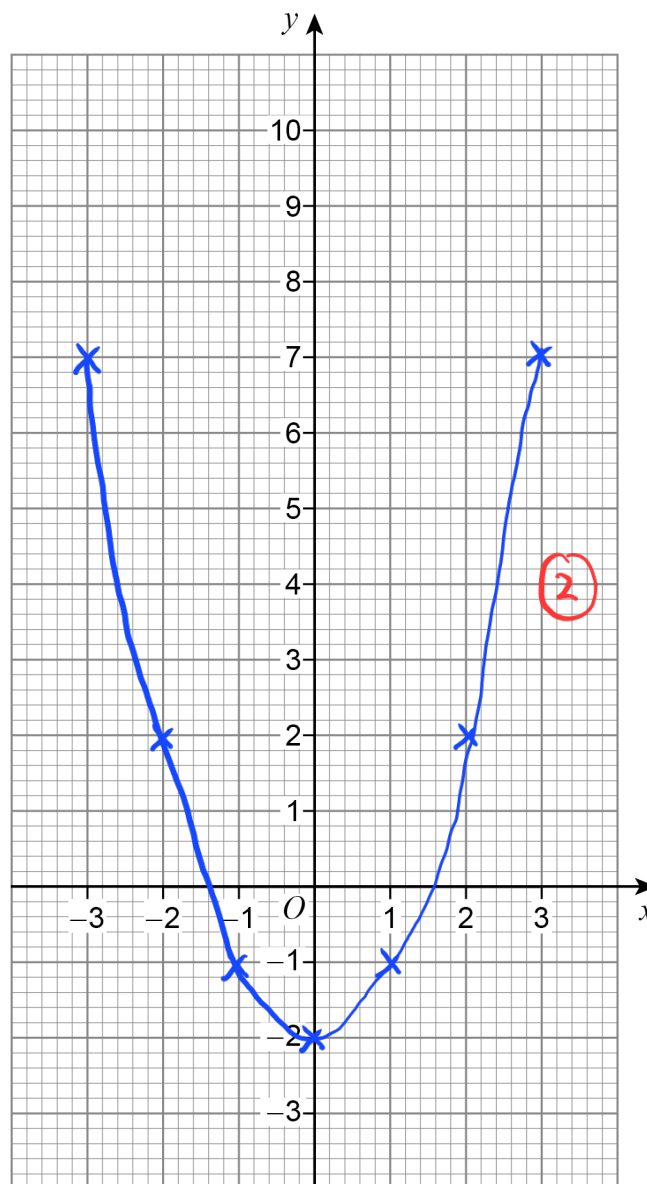
[1 mark]

x	-3	-2	-1	0	1	2	3
y	7	2	-1	-2	-1	2	7

①

- 1 (b) Draw the graph of $y = x^2 - 2$ for values of x from -3 to 3

[2 marks]



- 2 (a) Complete the table of values for $y = x^2 + 2x$

[2 marks]

x	-3	-2	-1	0	1
y	3	0	-1	0	3

- 2 (b) Draw the graph of $y = x^2 + 2x$ for values of x from -3 to 1

[2 marks]

